

Helmcken Rd between Knockan Dr and Santa Rosa Ave

November 22, 2020 To November 27, 2020



The data presented here is for information purposes only and should not be considered authoritative for construction, geotechnical, engineering, navigational, legal, or other site-specific uses. The information shared is owned by the Transportation Division of the Engineering Department at the District of Saanich. Accuracy is not guaranteed.

Start Date: 23-Nov-20
 Start Time: 23:00
 Station ID: M0022-01

Location 1: Helmcken Rd between Knockan Dr and Santa Rosa Ave

Note:

DATE:	November 23, 2020		November 24, 2020		November 25, 2020		November 26, 2020		November 27, 2020		WK AVG		WK AVG	HOURLY
	MON		TUE		WED		THURS		FRI		NB	SB	CH 1+2	%
Time:	NB	SB	NB	SB	NB	SB	NB	SB	NB	SB	NB	SB		
12-1 AM	16	21	16	23	12	30	19	39			16	28	44	0.3%
1-2 AM	10	16	8	12	15	7	9	12			11	12	22	0.1%
2-3 AM	14	7	21	17	15	14	16	11			17	12	29	0.2%
3-4 AM	19	14	17	8	21	13	21	16			20	13	32	0.2%
4-5 AM	37	21	39	24	37	24	37	22			38	23	60	0.4%
5-6 AM	194	54	210	58	195	60	213	58			203	58	261	1.7%
6-7 AM	525	245	546	260	538	269	541	277			538	263	800	5.3%
7-8 AM	613	434	674	464	666	479	669	453			656	458	1113	7.4%
8-9 AM	542	538	601	532	563	541	588	566			574	544	1118	7.5%
9-10 AM	433	454	469	492	465	499	520	494			472	485	957	6.4%
10-11 AM	442	483	466	432	447	480	466	496			455	473	928	6.2%
11-12 PM	478	499	473	476	498	471	510	502			490	487	977	6.5%
12-1 PM	493	458	531	582	526	517	550	551			525	527	1052	7.0%
1-2 PM	531	514	498	525	535	552	524	558			522	537	1059	7.1%
2-3 PM	560	506	576	549	556	594	580	582			568	558	1126	7.5%
3-4 PM	532	676	511	670	522	622	559	684			531	663	1194	8.0%
4-5 PM	536	621	503	619	570	652	513	597			531	622	1153	7.7%
5-6 PM	423	520	424	505	436	533	477	573			440	533	973	6.5%
6-7 PM	313	362	308	354	342	390	329	403			323	377	700	4.7%
7-8 PM	248	265	239	274	267	258	279	255			258	263	521	3.5%
8-9 PM	207	180	188	154	186	170	208	199			197	176	373	2.5%
9-10 PM	103	101	97	100	124	114	103	131			107	112	218	1.5%
10-11 PM	57	95	63	87	83	96	83	109			72	97	168	1.1%
11-12 AM	35	63	48	62	41	61	52	75			44	65	109	0.7%
LANES	7361	7147	7526	7279	7660	7446	7866	7663			7603	7384	14987	100.0%
TOTAL	14508		14805		15106		15529				14990			
	MON		TUE		WED		THURS		FRI		WK AVG			

PEAK HOUR					TOTAL VEHICALS-PEAK PERIODS		2 HOUR PEAK INTERVALS					
MAX. 7 - 9 am PEAK HOUR	1118	⇒	7.5%	between	8-9 AM	6385	⇒	6 HR TOTAL	2 HR AM (7 - 9 AM)			
MAX. 7 - 11 am PEAK HOUR	1118	⇒	7.5%	between	8-9 AM	4356	⇒	4 HR TOTAL	VEH / HR	VEH / 2HR	2 HR %	
									7-8 AM	1113	2231	14.9%
									8-9 AM	1118		
MAX. 11 am - 1 pm PEAK HOUR	1052	⇒	7.0%	between	12-1 PM	2 HR NOON (11 - 1 PM)						
MAX. 11 am - 3 pm PEAK HOUR	1126	⇒	7.5%	between	2-3 PM	VEH / HR VEH / 2HR 2 HR %						
MAX. 4 - 6 pm PEAK HOUR	1153	⇒	7.7%	between	4-5 PM	11-12 PM 977 2029 13.5%						
MAX. 3 - 6 pm PEAK HOUR	1194	⇒	8.0%	between	3-4 PM	12-1 PM 1052						
						2 HR PM (4 - 6 PM)						
						VEH / HR VEH / 2HR 2 HR %						
						4-5 PM 1153 2126 14.2%						
						5-6 PM 973						

Helmcken Rd between Knockan Dr and Santa Rosa Ave

Northbound

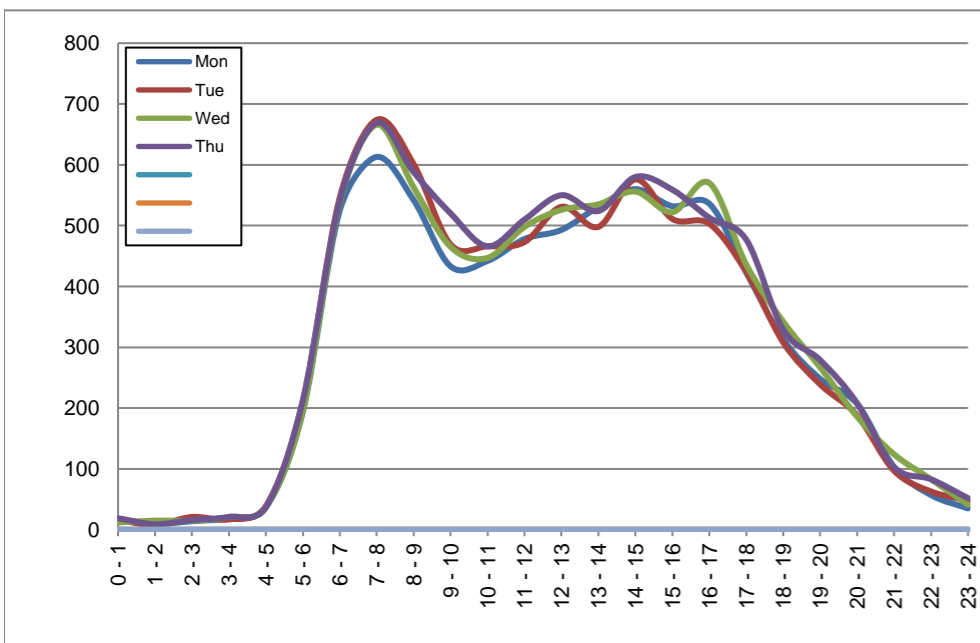
November 23, 2020 to November 26, 2020

Hourly Volumes

Time Period	Mon	Tue	Wed	Thu			
	Nov 23	Nov 24	Nov 25	Nov 26			
0 - 1	16	16	12	19			
1 - 2	10	8	15	9			
2 - 3	14	21	15	16			
3 - 4	19	17	21	21			
4 - 5	37	39	37	37			
5 - 6	194	210	195	213			
6 - 7	525	546	538	541			
7 - 8	613	674	666	669			
8 - 9	542	601	563	588			
9 - 10	433	469	465	520			
10 - 11	442	466	447	466			
11 - 12	478	473	498	510			
12 - 13	493	531	526	550			
13 - 14	531	498	535	524			
14 - 15	560	576	556	580			
15 - 16	532	511	522	559			
16 - 17	536	503	570	513			
17 - 18	423	424	436	477			
18 - 19	313	308	342	329			
19 - 20	248	239	267	279			
20 - 21	207	188	186	208			
21 - 22	103	97	124	103			
22 - 23	57	63	83	83			
23 - 24	35	48	41	52			
Day Total	7361	7526	7660	7866			

15-Minute Volumes

Time Start	Mon	Tue	Wed	Thu				Time Start	Mon	Tue	Wed	Thu			
	Nov 23	Nov 24	Nov 25	Nov 26					Nov 23	Nov 24	Nov 25	Nov 26			
0:00	4	9	5	11				12:00	133	129	126	117			
0:15	5	3	3	2				12:15	113	149	145	142			
0:30	4	2	0	1				12:30	131	119	126	144			
0:45	3	2	4	5				12:45	116	134	129	147			
1:00	2	3	4	4				13:00	134	123	134	147			
1:15	3	3	2	2				13:15	120	130	131	132			
1:30	2	1	3	1				13:30	142	120	128	131			
1:45	3	1	6	2				13:45	135	125	142	114			
2:00	5	7	5	3				14:00	132	147	129	147			
2:15	2	5	1	5				14:15	135	144	152	127			
2:30	4	6	6	4				14:30	139	150	142	157			
2:45	3	3	3	4				14:45	154	135	133	149			
3:00	2	3	4	2				15:00	135	139	139	166			
3:15	4	1	2	6				15:15	124	120	136	118			
3:30	4	2	8	9				15:30	126	133	123	137			
3:45	9	11	7	4				15:45	147	119	124	138			
4:00	7	2	6	3				16:00	134	110	162	138			
4:15	8	11	10	17				16:15	137	130	138	115			
4:30	8	12	11	6				16:30	140	132	139	120			
4:45	14	14	10	11				16:45	125	131	131	140			
5:00	24	21	20	23				17:00	122	109	124	135			
5:15	27	34	34	38				17:15	131	103	98	138			
5:30	77	67	70	64				17:30	90	102	113	110			
5:45	66	88	71	88				17:45	80	110	101	94			
6:00	85	104	96	98				18:00	84	82	111	92			
6:15	126	142	141	118				18:15	76	78	70	87			
6:30	169	157	150	156				18:30	92	75	93	75			
6:45	145	143	151	169				18:45	61	73	68	75			
7:00	144	147	147	135				19:00	77	57	60	62			
7:15	151	166	180	190				19:15	63	67	65	63			
7:30	140	179	178	169				19:30	64	60	77	83			
7:45	178	182	161	175				19:45	44	55	65	71			
8:00	134	161	158	138				20:00	58	59	58	54			
8:15	150	156	146	146				20:15	52	39	56	52			
8:30	124	143	129	148				20:30	51	51	41	58			
8:45	134	141	130	156				20:45	46	39	31	44			
9:00	98	91	115	127				21:00	35	31	35	28			
9:15	114	110	113	123				21:15	20	31	35	31			
9:30	114	142	113	143				21:30	26	19	22	29			
9:45	107	126	124	127				21:45	22	16	32	15			
10:00	101	110	85	103				22:00	20	16	24	23			
10:15	103	127	112	126				22:15	12	17	24	19			
10:30	116	108	134	122				22:30	14	14	17	23			
10:45	122	121	116	115				22:45	11	16	18	18			
11:00	126	114	135	117				23:00	16	15	13	20			
11:15	102	116	121	121				23:15	9	14	6	14			
11:30	135	111	125	140				23:30	7	8	8	7			
11:45	115	132	117	132				23:45	3	11	14	11			



Site notes:

Helmcken Rd between Knockan Dr and Santa Rosa Ave

Southbound

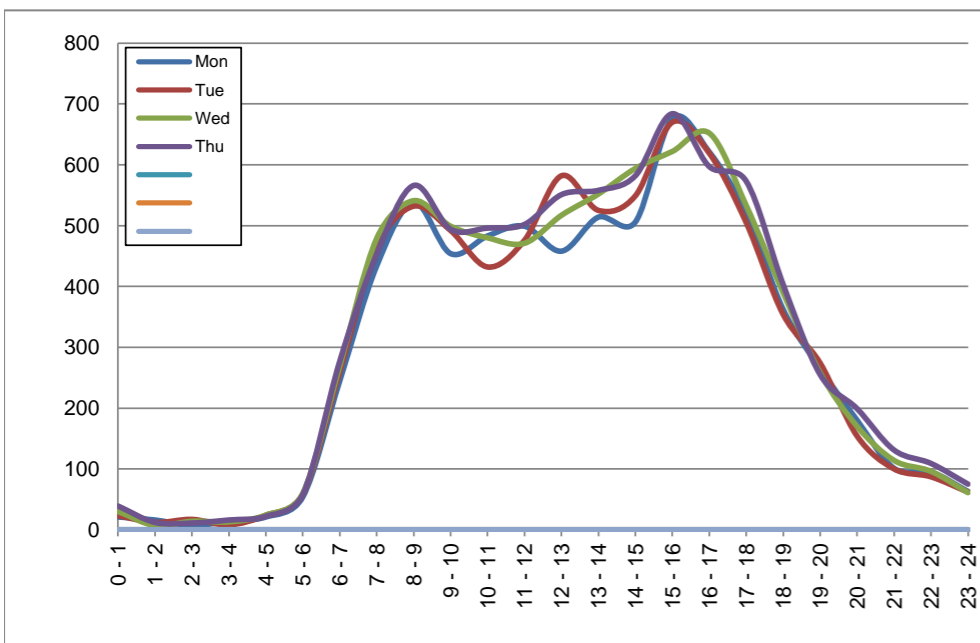
November 23, 2020 to November 26, 2020

Hourly Volumes

Time Period	Mon	Tue	Wed	Thu			
	Nov 23	Nov 24	Nov 25	Nov 26			
0 - 1	21	23	30	39			
1 - 2	16	12	7	12			
2 - 3	7	17	14	11			
3 - 4	14	8	13	16			
4 - 5	21	24	24	22			
5 - 6	54	58	60	58			
6 - 7	245	260	269	277			
7 - 8	434	464	479	453			
8 - 9	538	532	541	566			
9 - 10	454	492	499	494			
10 - 11	483	432	480	496			
11 - 12	499	476	471	502			
12 - 13	458	582	517	551			
13 - 14	514	525	552	558			
14 - 15	506	549	594	582			
15 - 16	676	670	622	684			
16 - 17	621	619	652	597			
17 - 18	520	505	533	573			
18 - 19	362	354	390	403			
19 - 20	265	274	258	255			
20 - 21	180	154	170	199			
21 - 22	101	100	114	131			
22 - 23	95	87	96	109			
23 - 24	63	62	61	75			
Day Total	7147	7279	7446	7663			

15-Minute Volumes

Time Start	Mon	Tue	Wed	Thu				Time Start	Mon	Tue	Wed	Thu			
	Nov 23	Nov 24	Nov 25	Nov 26					Nov 23	Nov 24	Nov 25	Nov 26			
0:00	10	8	13	13				12:00	117	146	121	123			
0:15	7	7	12	14				12:15	112	160	128	138			
0:30	3	5	4	8				12:30	115	153	140	143			
0:45	1	3	1	4				12:45	114	123	128	147			
1:00	4	6	1	6				13:00	139	134	102	141			
1:15	2	1	4	1				13:15	129	142	159	133			
1:30	5	2	2	3				13:30	122	122	144	151			
1:45	5	3	0	2				13:45	124	127	147	133			
2:00	1	7	3	5				14:00	115	139	146	142			
2:15	2	5	5	4				14:15	115	124	142	154			
2:30	3	4	2	1				14:30	136	137	145	140			
2:45	1	1	4	1				14:45	140	149	161	146			
3:00	3	2	2	3				15:00	177	187	144	189			
3:15	2	3	5	4				15:15	159	165	159	165			
3:30	5	1	3	6				15:30	173	163	155	172			
3:45	4	2	3	3				15:45	167	155	164	158			
4:00	4	3	7	2				16:00	172	159	173	156			
4:15	3	6	4	6				16:15	151	170	168	151			
4:30	5	8	7	8				16:30	152	147	142	148			
4:45	9	7	6	6				16:45	146	143	169	142			
5:00	6	10	5	8				17:00	153	142	150	145			
5:15	7	11	11	12				17:15	135	129	155	164			
5:30	17	18	19	15				17:30	132	113	126	155			
5:45	24	19	25	23				17:45	100	121	102	109			
6:00	36	38	28	35				18:00	98	85	109	124			
6:15	52	55	60	70				18:15	87	99	90	96			
6:30	76	78	76	98				18:30	95	73	99	82			
6:45	81	89	105	74				18:45	82	97	92	101			
7:00	89	75	92	88				19:00	87	75	81	74			
7:15	109	122	110	105				19:15	72	89	66	78			
7:30	115	128	117	125				19:30	59	64	67	48			
7:45	121	139	160	135				19:45	47	46	44	55			
8:00	122	111	127	124				20:00	56	50	48	68			
8:15	127	138	132	138				20:15	42	47	56	43			
8:30	121	125	128	142				20:30	36	29	34	47			
8:45	168	158	154	162				20:45	46	28	32	41			
9:00	118	145	150	143				21:00	35	27	41	46			
9:15	113	132	124	113				21:15	18	30	28	27			
9:30	109	109	104	125				21:30	30	26	27	32			
9:45	114	106	121	113				21:45	18	17	18	26			
10:00	134	104	131	107				22:00	34	21	34	22			
10:15	122	99	114	109				22:15	28	26	31	44			
10:30	119	118	106	146				22:30	19	15	13	21			
10:45	108	111	129	134				22:45	14	25	18	22			
11:00	114	121	115	130				23:00	22	16	22	24			
11:15	120	101	116	112				23:15	17	19	18	16			
11:30	132	121	132	122				23:30	11	16	12	25			
11:45	133	133	108	138				23:45	13	11	9	10			



Site notes:

Vehicle Speed Summary

Saanich Engineering Department

Count Id: [M0022-01](#)

Filename: [Helmcken Rd between Knockan Dr and Santa Rosa Ave-Nov-2020.xlsm](#)

Location: Helmcken Rd between Knockan Dr and Santa Rosa Ave

Note:

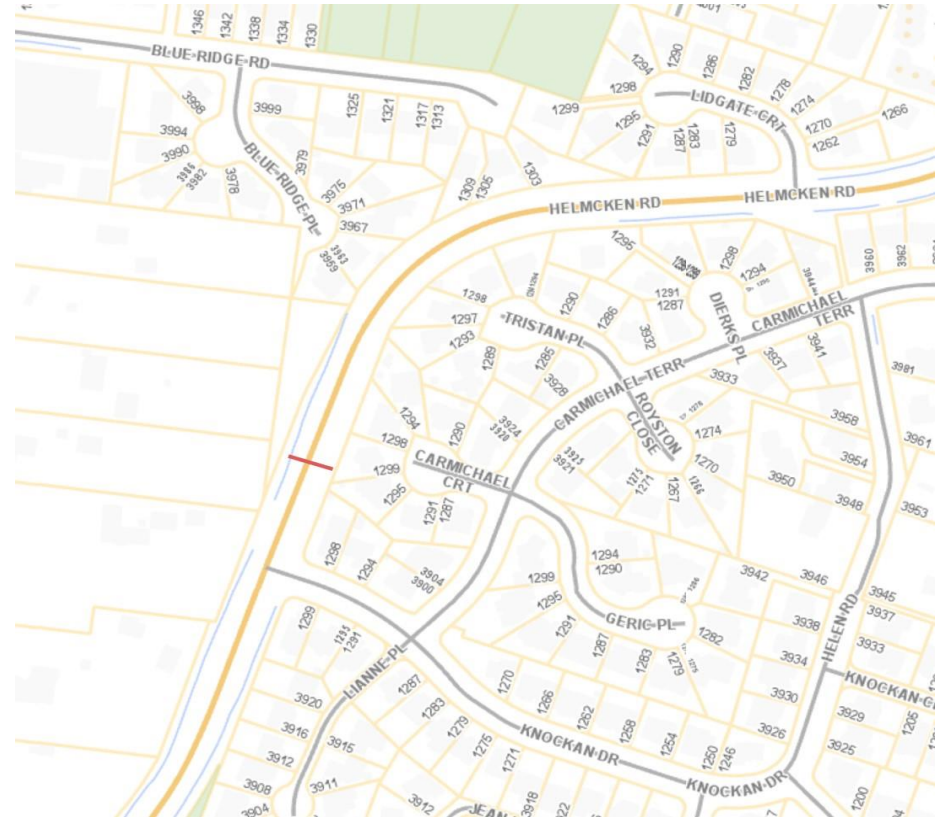
Direction: **North-South**

Dates: **November 22, 2020 To November 27, 2020**

Filtered data

AVG. SPEED	34 mph	55 km/h
50 % SPEED	34 mph	56 km/h
85 % SPEED	38 mph	62 km/h
95 % SPEED	41 mph	66 km/h

Location Map



Helmcken Rd between Knockan Dr and Santa Rosa Ave

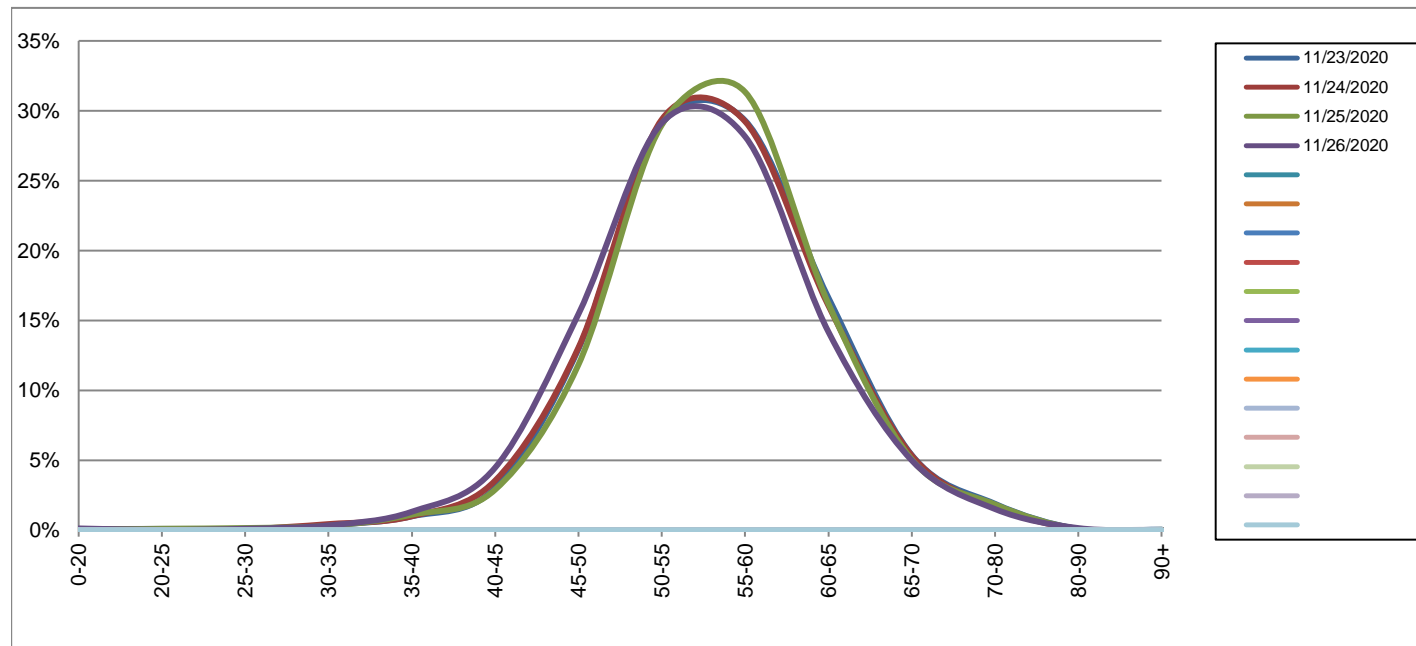
Northbound

November 23, 2020 to November 26, 2020

Daily Speed Bin Percentages														Daily Speed Bin Volumes														Total	Avg.	
Bin #	1	2	3	4	5	6	7	8	9	10	11	12	13	14	1	2	3	4	5	6	7	8	9	10	11	12	13	14	Volume	Speed
Bin Speeds	0-20	20-25	25-30	30-35	35-40	40-45	45-50	50-55	55-60	60-65	65-70	70-80	80-90	90+	0-20	20-25	25-30	30-35	35-40	40-45	45-50	50-55	55-60	60-65	65-70	70-80	80-90	90+		
11/23/2020	0.1%	0.1%	0.1%	0.4%	1.0%	3.0%	13.0%	29.1%	29.3%	16.6%	5.4%	1.9%	0.1%	0.0%	6	7	8	26	73	222	954	2139	2157	1224	396	139	7	3	7361	56
11/24/2020	0.1%	0.0%	0.1%	0.4%	1.0%	3.5%	13.1%	29.4%	29.2%	16.1%	5.3%	1.7%	0.1%	0.0%	5	3	6	33	75	267	983	2211	2200	1209	402	125	7	0	7526	55
11/25/2020	0.0%	0.1%	0.2%	0.3%	1.1%	2.9%	11.8%	29.0%	31.3%	16.2%	5.1%	1.8%	0.1%	0.0%	3	8	12	24	85	222	907	2220	2401	1241	388	141	6	2	7660	56
11/26/2020	0.1%	0.0%	0.1%	0.3%	1.3%	4.5%	15.5%	29.1%	28.2%	14.2%	5.0%	1.5%	0.2%	0.0%	10	2	8	27	104	352	1216	2291	2215	1116	393	119	12	1	7866	55
Total	0.1%	0.1%	0.1%	0.4%	1.1%	3.5%	13.3%	29.1%	29.5%	15.7%	5.2%	1.7%	0.1%	0.0%	24	20	34	110	337	1063	4060	8861	8973	4790	1579	524	32	6	30413	55

Speed Data Summary

Bin #	1	2	3	4	5	6	7	8	9	10	11	12	13	14	Total
Bin Speeds	0-20	20-25	25-30	30-35	35-40	40-45	45-50	50-55	55-60	60-65	65-70	70-80	80-90	90+	
Survey Total	24	20	34	110	337	1063	4060	8861	8973	4790	1579	524	32	6	30413
% Total	0.1%	0.1%	0.1%	0.4%	1.1%	3.5%	13.3%	29.1%	29.5%	15.7%	5.2%	1.7%	0.1%	0.0%	100%
Accumulated %	0.1%	0.1%	0.3%	0.6%	1.7%	5.2%	18.6%	47.7%	77.2%	93.0%	98.2%	99.9%	100.0%	100%	
Inverse Accum. %	99.9%	99.9%	99.7%	99.4%	98.3%	94.8%	81.4%	52.3%	22.8%	7.0%	1.8%	0.1%	0.0%	0.0%	
Average Speed	55 KM/H														



Site notes:

Helmcken Rd between Knockan Dr and Santa Rosa Ave

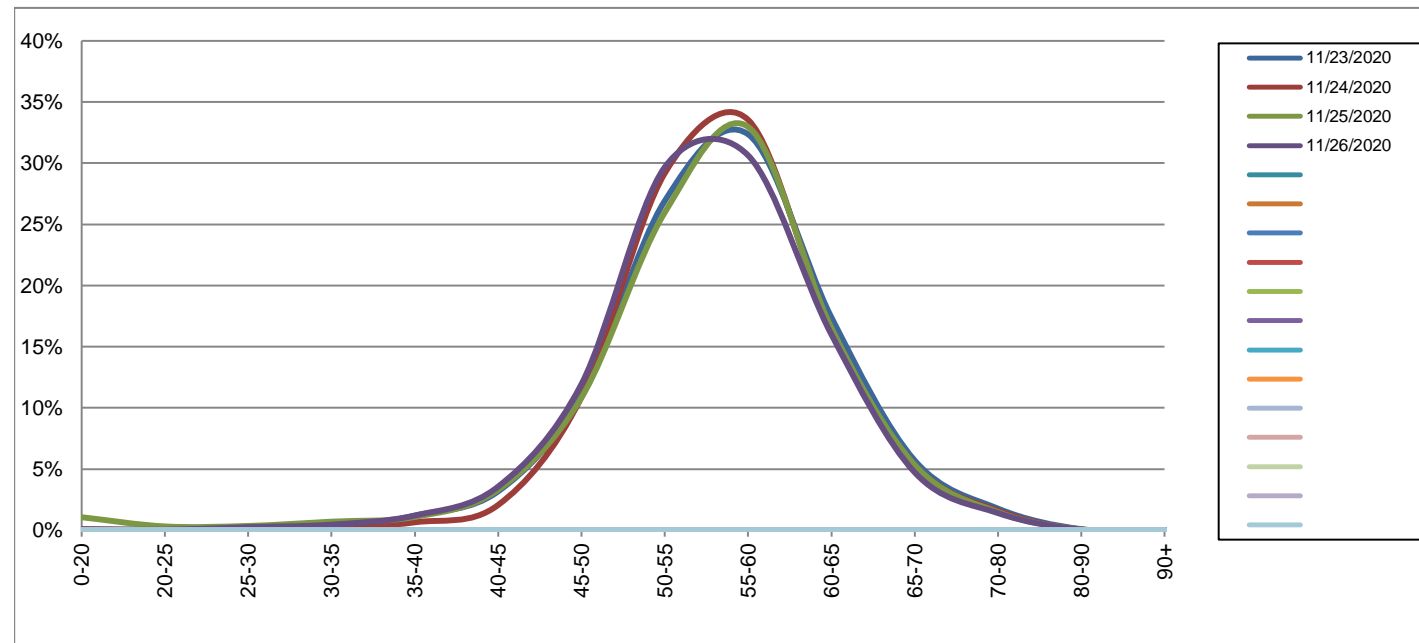
Southbound

November 23, 2020 to November 26, 2020

Daily Speed Bin Percentages															Daily Speed Bin Volumes														Total	Avg.
Bin #	1	2	3	4	5	6	7	8	9	10	11	12	13	14	1	2	3	4	5	6	7	8	9	10	11	12	13	14		
Bin Speeds	0-20	20-25	25-30	30-35	35-40	40-45	45-50	50-55	55-60	60-65	65-70	70-80	80-90	90+	0-20	20-25	25-30	30-35	35-40	40-45	45-50	50-55	55-60	60-65	65-70	70-80	80-90	90+	Volume	Speed
11/23/2020	0.1%	0.1%	0.1%	0.2%	1.2%	3.2%	11.0%	26.9%	32.4%	17.4%	5.7%	1.8%	0.1%	0.0%	4	4	10	11	85	227	787	1924	2313	1243	407	126	6	0	7147	56
11/24/2020	0.1%	0.0%	0.0%	0.2%	0.6%	2.1%	10.9%	29.2%	33.5%	16.4%	5.3%	1.6%	0.1%	0.0%	6	1	1	14	47	150	791	2124	2442	1195	387	116	4	1	7279	56
11/25/2020	1.1%	0.3%	0.3%	0.7%	1.1%	3.3%	10.8%	26.0%	33.0%	16.5%	5.3%	1.5%	0.1%	0.0%	79	23	26	52	81	246	807	1934	2455	1231	397	110	5	0	7446	55
11/26/2020	0.1%	0.0%	0.2%	0.5%	1.2%	3.6%	11.9%	29.7%	30.6%	16.0%	4.7%	1.4%	0.1%	0.0%	5	3	19	35	92	273	915	2274	2348	1226	362	107	4	0	7663	55
Total	0.3%	0.1%	0.2%	0.4%	1.0%	3.0%	11.2%	28.0%	32.4%	16.6%	5.3%	1.6%	0.1%	0.0%	94	31	56	112	305	896	3300	8256	9558	4895	1553	459	19	1	29535	56

Speed Data Summary

Bin #	1	2	3	4	5	6	7	8	9	10	11	12	13	14	Total
Bin Speeds	0-20	20-25	25-30	30-35	35-40	40-45	45-50	50-55	55-60	60-65	65-70	70-80	80-90	90+	
Survey Total	94	31	56	112	305	896	3300	8256	9558	4895	1553	459	19	1	29535
% Total	0.3%	0.1%	0.2%	0.4%	1.0%	3.0%	11.2%	28.0%	32.4%	16.6%	5.3%	1.6%	0.1%	0.0%	100%
Accumulated %	0.3%	0.4%	0.6%	1.0%	2.0%	5.1%	16.2%	44.2%	76.5%	93.1%	98.4%	99.9%	100.0%	100%	
Inverse Accum. %	99.7%	99.6%	99.4%	99.0%	98.0%	94.9%	83.8%	55.8%	23.5%	6.9%	1.6%	0.1%	0.0%	0.0%	
Average Speed	56 KM/H														



Site notes:

Helmcken Rd between Knockan Dr and Santa Rosa Ave

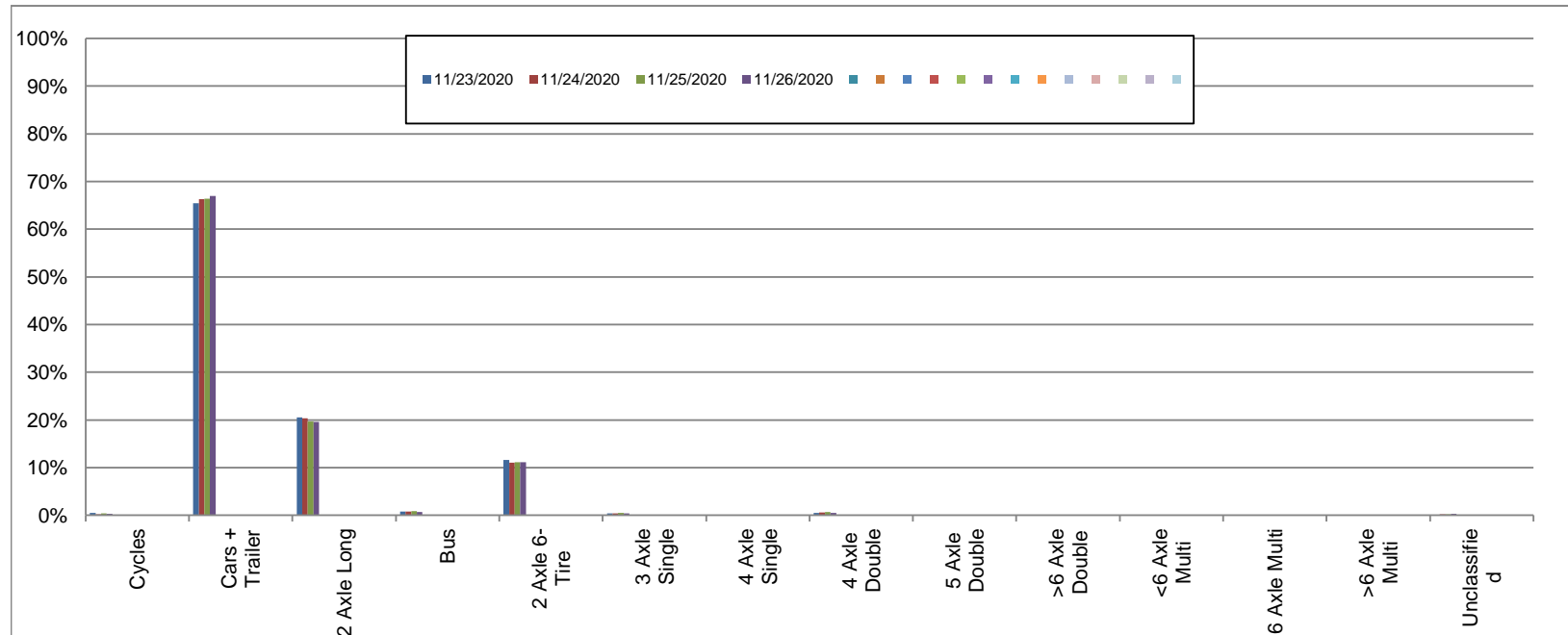
Northbound

November 23, 2020 to November 26, 2020

Daily Class Bin Percentages															Daily Class Bin Volumes											Total Volume			
Bin #	1	2	3	4	5	6	7	8	9	10	11	12	13	14	1	2	3	4	5	6	7	8	9	10	11		12	13	14
Bin Class	Cycles	Cars + Trailer	2 Axle Long	Bus	2 Axle 6-Tire	3 Axle Single	4 Axle Single	4 Axle Double	5 Axle Double	>6 Axle Double	<6 Axle Multi	6 Axle Multi	>6 Axle Multi	Unclassified	Cycles	Cars + Trailer	2 Axle Long	Bus	2 Axle 6-Tire	3 Axle Single	4 Axle Single	4 Axle Double	5 Axle Double	>6 Axle Double	<6 Axle Multi	6 Axle Multi	>6 Axle Multi	Unclassified	
11/23/2020	0.4%	65.4%	20.5%	0.8%	11.6%	0.4%	0.1%	0.5%	0.0%	0.1%	0.0%	0.0%	0.0%	0.1%	33	4816	1509	57	852	32	4	39	2	7	0	0	0	10	7361
11/24/2020	0.2%	66.3%	20.4%	0.8%	11.0%	0.4%	0.1%	0.5%	0.0%	0.1%	0.0%	0.0%	0.0%	0.2%	18	4991	1533	60	831	28	4	41	1	5	0	0	1	13	7526
11/25/2020	0.4%	66.4%	19.7%	0.8%	11.1%	0.5%	0.1%	0.7%	0.1%	0.1%	0.0%	0.0%	0.0%	0.2%	31	5085	1510	64	851	35	4	51	4	6	0	0	1	18	7660
11/26/2020	0.3%	67.0%	19.6%	0.6%	11.1%	0.4%	0.1%	0.5%	0.0%	0.1%	0.0%	0.0%	0.0%	0.3%	21	5267	1540	51	877	30	5	41	3	5	0	0	1	25	7866
Total	0.3%	66.3%	20.0%	0.8%	11.2%	0.4%	0.1%	0.6%	0.0%	0.1%	0.0%	0.0%	0.0%	0.2%	103	20159	6092	232	3411	125	17	172	10	23	0	0	3	66	30413

Class Data Summary

Bin #	1	2	3	4	5	6	7	8	9	10	11	12	13	14	Total Volume
Bin Class	Cycles	Cars + Trailer	2 Axle Long	Bus	2 Axle 6-Tire	3 Axle Single	4 Axle Single	4 Axle Double	5 Axle Double	>6 Axle Double	<6 Axle Multi	6 Axle Multi	>6 Axle Multi	Unclassified	Total Volume
Survey Total	103	20159	6092	232	3411	125	17	172	10	23	0	0	3	66	30413
% Total	0.3%	66.3%	20.0%	0.8%	11.2%	0.4%	0.1%	0.6%	0.0%	0.1%	0.0%	0.0%	0.0%	0.2%	100%
Accumulated %	0.3%	66.6%	86.7%	87.4%	98.6%	99.0%	99.1%	99.7%	99.7%	99.8%	99.8%	99.8%	99.8%	100.0%	
Inv. Accum. %	99.7%	33.4%	13.3%	12.6%	1.4%	1.0%	0.9%	0.3%	0.3%	0.2%	0.2%	0.2%	0.2%	0.0%	



Classification Descriptions

Bin #	Bin Description
1	Motorcycles
2	Passenger cars, including those with recreational trailers
3	2-axle pick-ups, vans, and RVs, including those with recreational trailers
4	Buses
5	2-axle, 6-tire single units
6	3-axle single units
7	4-axle single units
8	3-axle or 4-axle double unit
9	5-axle double unit
10	6-, 7-, or 8-axle double unit
11	5-axle multiple unit
12	6-axle multiple unit
13	7-or-more-axle multiple unit
14	Vehicles that could not be classified

Site notes:

Helmcken Rd between Knockan Dr and Santa Rosa Ave

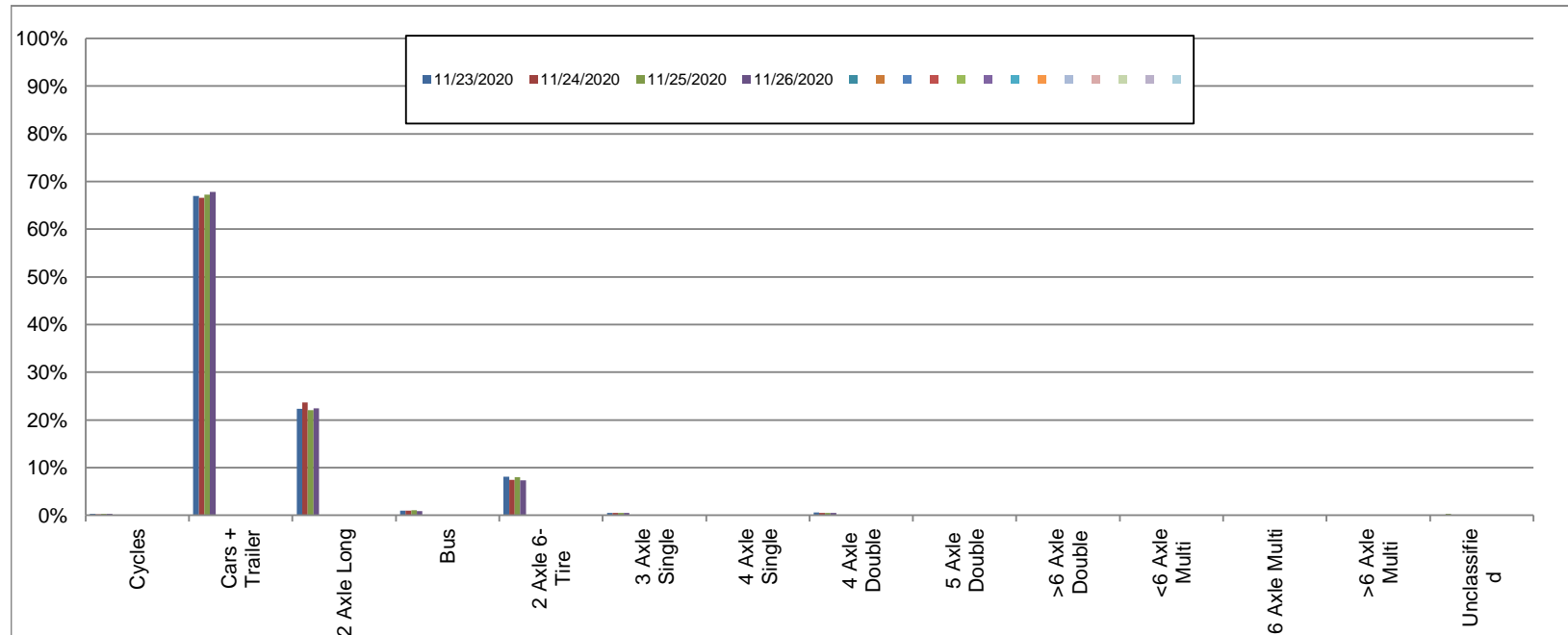
Southbound

November 23, 2020 to November 26, 2020

Daily Class Bin Percentages															Daily Class Bin Volumes														
Bin #	1	2	3	4	5	6	7	8	9	10	11	12	13	14	1	2	3	4	5	6	7	8	9	10	11	12	13	14	Total Volume
Bin Class	Cycles	Cars + Trailer	2 Axle Long	Bus	2 Axle 6-Tire	3 Axle Single	4 Axle Single	4 Axle Double	5 Axle Double	>6 Axle Double	<6 Axle Multi	6 Axle Multi	>6 Axle Multi	Unclassified	Cycles	Cars + Trailer	2 Axle Long	Bus	2 Axle 6-Tire	3 Axle Single	4 Axle Single	4 Axle Double	5 Axle Double	>6 Axle Double	<6 Axle Multi	6 Axle Multi	>6 Axle Multi	Unclassified	
11/23/2020	0.3%	67.0%	22.4%	1.0%	8.0%	0.5%	0.0%	0.6%	0.0%	0.1%	0.0%	0.0%	0.0%	0.1%	24	4788	1598	71	575	36	1	40	3	6	0	0	0	5	7147
11/24/2020	0.2%	66.6%	23.7%	1.0%	7.4%	0.5%	0.0%	0.5%	0.0%	0.1%	0.0%	0.0%	0.0%	0.0%	14	4848	1725	71	541	37	1	33	1	5	0	0	0	3	7279
11/25/2020	0.3%	67.2%	22.1%	1.0%	8.0%	0.5%	0.0%	0.5%	0.1%	0.1%	0.0%	0.0%	0.0%	0.3%	22	5005	1645	77	597	36	1	34	4	4	0	0	1	20	7446
11/26/2020	0.3%	67.8%	22.5%	0.9%	7.4%	0.5%	0.0%	0.5%	0.0%	0.1%	0.0%	0.0%	0.0%	0.1%	26	5195	1721	69	564	36	1	35	3	7	0	0	0	6	7663
Total	0.3%	67.2%	22.6%	1.0%	7.7%	0.5%	0.0%	0.5%	0.0%	0.1%	0.0%	0.0%	0.0%	0.1%	86	19836	6689	288	2277	145	4	142	11	22	0	0	1	34	29535

Class Data Summary

Bin #	1	2	3	4	5	6	7	8	9	10	11	12	13	14	Total Volume
Bin Class	Cycles	Cars + Trailer	2 Axle Long	Bus	2 Axle 6-Tire	3 Axle Single	4 Axle Single	4 Axle Double	5 Axle Double	>6 Axle Double	<6 Axle Multi	6 Axle Multi	>6 Axle Multi	Unclassified	Total Volume
Survey Total	86	19836	6689	288	2277	145	4	142	11	22	0	0	1	34	29535
% Total	0.3%	67.2%	22.6%	1.0%	7.7%	0.5%	0.0%	0.5%	0.0%	0.1%	0.0%	0.0%	0.0%	0.1%	100%
Accumulated %	0.3%	67.5%	90.1%	91.1%	98.8%	99.3%	99.3%	99.8%	99.8%	99.9%	99.9%	99.9%	99.9%	100.0%	
Inv. Accum. %	99.7%	32.5%	9.9%	8.9%	1.2%	0.7%	0.7%	0.2%	0.2%	0.1%	0.1%	0.1%	0.1%	0.0%	



Classification Descriptions

Bin #	Bin Description
1	Motorcycles
2	Passenger cars, including those with recreational trailers
3	2-axle pick-ups, vans, and RVs, including those with recreational trailers
4	Buses
5	2-axle, 6-tire single units
6	3-axle single units
7	4-axle single units
8	3-axle or 4-axle double unit
9	5-axle double unit
10	6-, 7-, or 8-axle double unit
11	5-axle multiple unit
12	6-axle multiple unit
13	7-or-more-axle multiple unit
14	Vehicles that could not be classified

Site notes: